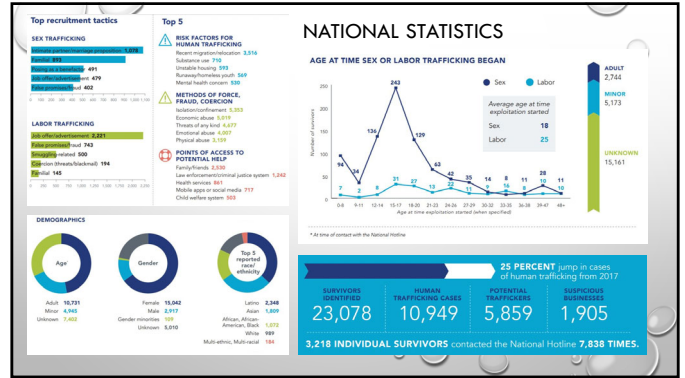


1



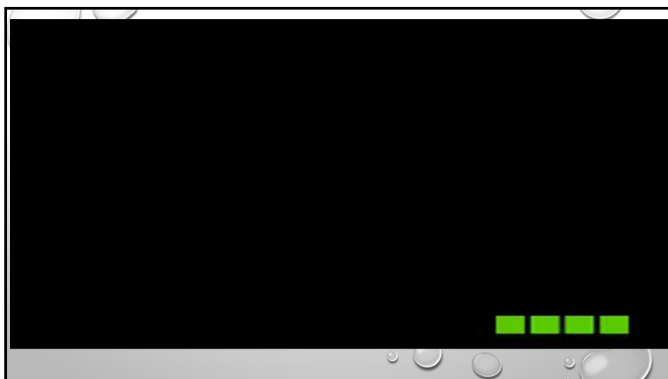
2



3



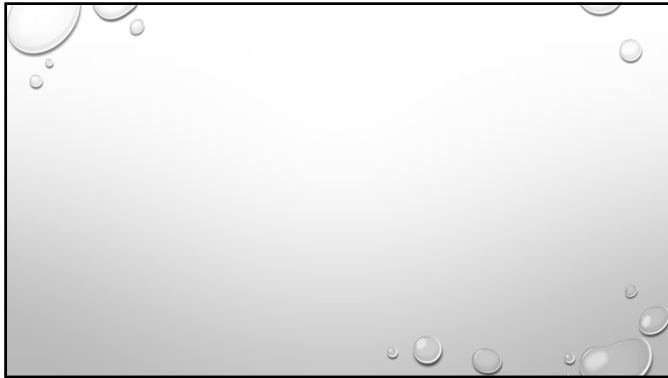
4



5



6




7

The Commercial Sexual Exploitation of Children (CSEC):

What is it?
Who's at risk?
What can we do?

8


WHAT IS IT



9

SEXUAL EXPLOITATION IN YOUTH

- Sexual exploitation is the exchange of sex for “something” (money, bed, food, safety) or the promise of “something” (star in a movie, rap video)
- Accomplished via force, fear, fraud or coercion
 - Minors – no force, fear, fraud or coercion required to qualify as human trafficking



10

WHAT DOES IT LOOK LIKE?


- Street “prostitution”
- Escort services
- Pornography
- Strip clubs
- “Massage parlors”
- Phone sex lines
- “Private parties”
- Gang-based prostitution
- Cyber market (craigslist, backpage.com, social media)
- Truck stops




11

EXPLOITATION OF MINORS

- Given food, clothes, attention, friendship, love, and a seemingly safe place to stay.
- Form relationship with the victim and create a false sense of trust – then introduce the victim into prostitution.
- Isolate victims by moving them far away from friends and family, altering their physical appearances, or continuously moving victims to new locations.
- Victims can become so hardened by the environment in which they must learn to survive that they are incapable of leaving the situation on their own.



12

WHAT DO YOU THINK?

By show of hands, is this sex trafficking?:

- A. A 13 year-old homeless youth performing a sex act for a place to sleep
- B. A mother trading a night with her 12-year-old son for drugs
- C. A 14-year-old posing for explicit photos for food
- D. A little league coach sexually abusing players
- E. A gang member providing fellow members a “girl to have fun with” for higher status in the gang



13

WHERE & WHO IS IT



14

WHERE DOES RECRUITMENT OCCUR?

- Juvenile hall
- Group/foster homes
- Parties
- School/friends
- Family
- Malls
- Bus stops
- Gangs
- Social media
- Advertisements



15

VICTIM RISK FACTORS

- Poverty
- History of sexual or physical abuse
- History of family or individual substance abuse
- Loss of a parent or caregiver
- Running away/being thrown away
- Lack of a support system
- Special education needs



16

WARNING SIGNS

- Unexplained school absences/irregular school attendance
- Chronic running away
- References frequent travel to other cities
- Bruising/signs of physical trauma
- Signs of emotional distress, including depression, withdrawn behavior, and anxiety



17

WARNING SIGNS (CONT)

- Unusual attachment to cellphone
- Strange tattoos
- Inappropriate dress
- Sudden change in material possessions
- References to sexual situations beyond what is appropriate for their age
- “A reputation”
- A noticeably older “boyfriend”



18

SOCIAL MEDIA RECRUITING

Riverside University HEALTH SYSTEM Behavioral Health

19

YES, IT HAPPENS HERE

Riverside University HEALTH SYSTEM Behavioral Health

20

NATIONAL STATISTICS

- 2015 report estimated 44% of victims entered into the “life” when they were 17-years of age or younger (NHTRC)
- 2015 report estimated the average age of a victim enters into the “life” is 15-years-old (DOJ)
- 1 in 6 of 18,500 runaways reported to the National Center for Missing & Exploited Children in 2016 were likely sex trafficking victims (NCMEC)
- 86% of these likely sex trafficking victims were in the care of social services or foster care when they went missing (NCMEC)

Riverside University HEALTH SYSTEM Behavioral Health

21

THE STATISTICS

- Riverside County is a “hotspot” for exploitation
- Recent report from CDSS
- 27% of the population are minors
- Over 127 victims have been officially been identified by Riverside County DPSS
- 70-85% of victims are, or have had contact with a county system

Riverside University HEALTH SYSTEM Behavioral Health

22

In **2017** the Riverside County Anti-Human Trafficking task force conducted **170** investigations, arresting **47** suspects.

Those **170** cases involved **100** victims of which **59** were either children under the age of **14** or minors aged **14 to 17**.

Riverside University HEALTH SYSTEM Behavioral Health

23

What is RUHS- Behavioral Health doing to combat these statistics?

Riverside University HEALTH SYSTEM Behavioral Health

24

THE CHALLENGE

- Historically the focus has been on the exploitation rather than the issue(s) that resulted in the vulnerability to be exploited (Trauma)
- All systems working together



25

TRAUMA

- Direct/indirect encounter with a dangerous or threatening event
- In the absence of healthy coping skills, this may lead to PTSD
- Trauma Impacts:
 - Individuals
 - Family
 - Education/employment
 - Community
 - Safety



26

RBY

RESILIENT BRAVE YOUTH

AN INNOVATION PROGRAM

27

RBY was developed to serve Commercially Sexually Exploited Youth throughout Riverside County through an innovation grant.



28

THE PURPOSE

- Confront the challenges of engagement
- Promote trauma informed care among multiple agencies.
- Increase interagency collaboration resulting in better outcomes for exploited youth and families.
- “Meet the youth where they are at” by utilizing the TF-CBT model to effectively treat trauma in a field based approach.



29

WHAT IS TF-CBT?

- Evidence based
- Involves family
- Skill/component based
- Time limited
- Most positive outcomes



30

Who is the treatment team?



31

THE TEAM

- Behavioral Health Supervisor
- Team Lead - TFCBT trained and experienced clinical therapist
- Psychiatrists experienced in trauma informed care
- Nurse (pending)
- Behavioral Health Specialist



32

THE TEAM

- TAY Peer & Parent Partner whose life has been impacted by sexual exploitation in some way
- Office Assistants
- Senior Team consisting of Senior CT, Senior TAY Peer, and Senior Parent Partner



33

THE APPROACH

- RBY consists of 5 Intensive Multidisciplinary Treatment Teams to provide every youth with;
 - Trauma Focused Cognitive Behavioral Therapy (TFCBT)
 - Motivational Interviewing
 - Psychiatric Evaluations
 - Health Screenings
 - Intensive Case Management Services



34

What changes can we expect?



35

EXPECTED OUTCOMES

- Improve service delivery for child victims of sexual exploitation
- Increase retention in behavioral health services
- Successful return to the community
- Increase functional outcomes
 - Increased participation in school or work
 - Reduce AWOL and placement challenges
 - Decrease recidivism rates for youth returning to trafficking



36

How will we reach these goals?



37

COMMUNITY COLLABORATION

- In addition to the RBY team all systems and individuals who are supporting the youth will meet on a regular basis
- Building stable community relationships and resources for the youth to continue after treatment discontinues.



38

How do I refer a potential youth?



39

REFER FOR ASSESSMENT

- Reasonable suspicion of exploitation
- Probation
- DPSS
- Department of Behavioral Health
- Community call RBY at 951-955-7829



40

Questions?



41